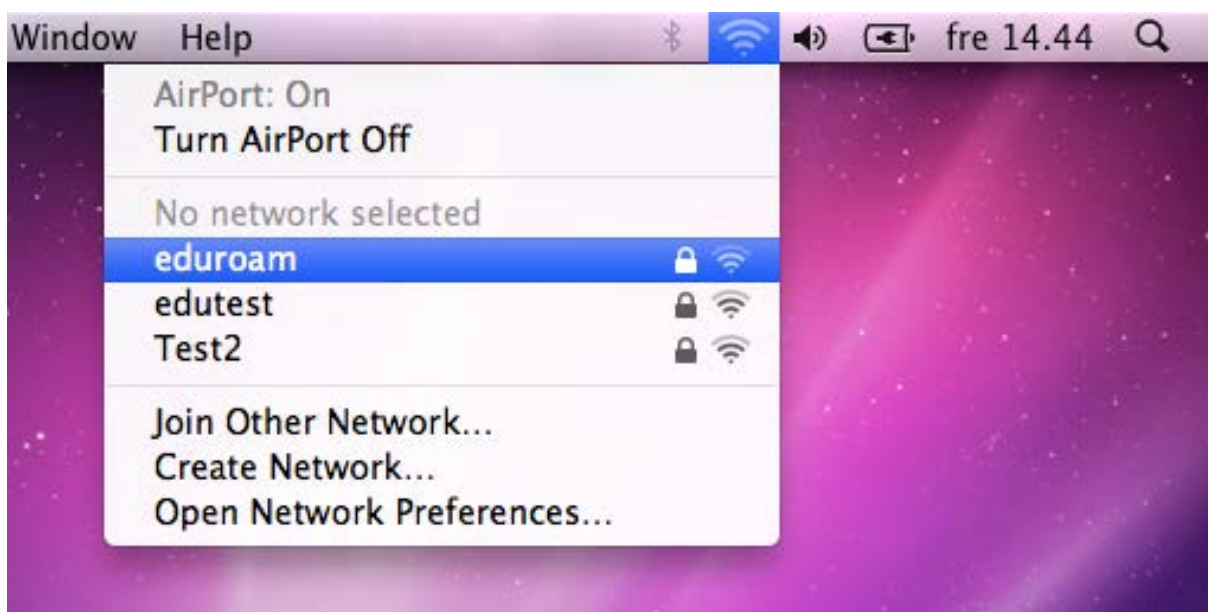


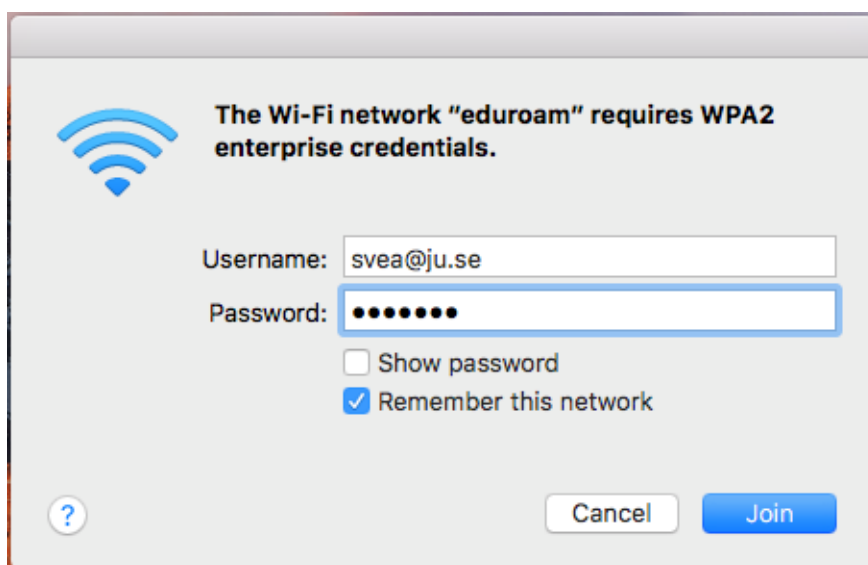


Connect to eduroam using Mac OS X

Open the menu for wireless network and choose eduroam.

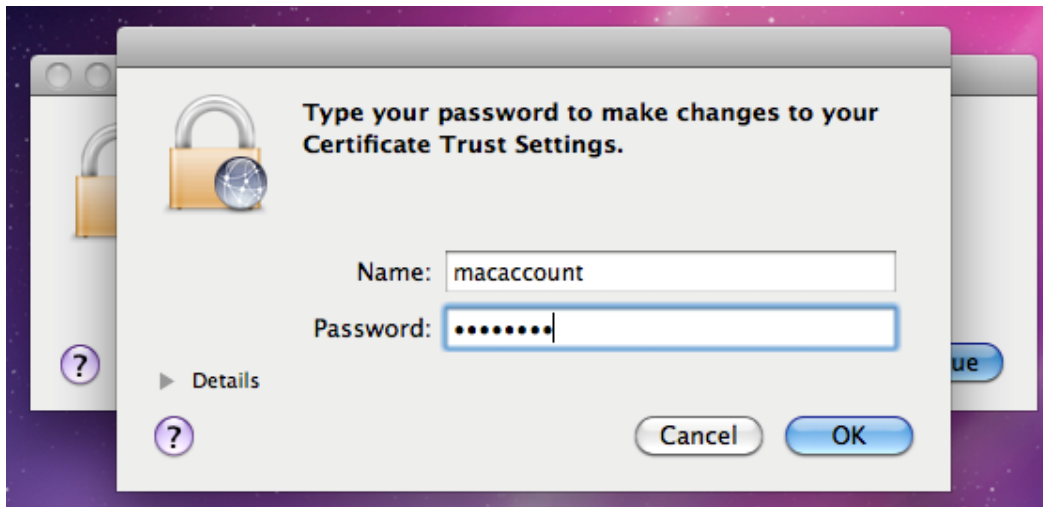


Login with your user name followed by @ju.se and your eduroam password.



Choose continue to verify the certificate.

Logon to your Mac account to save the certificate in the keychain.



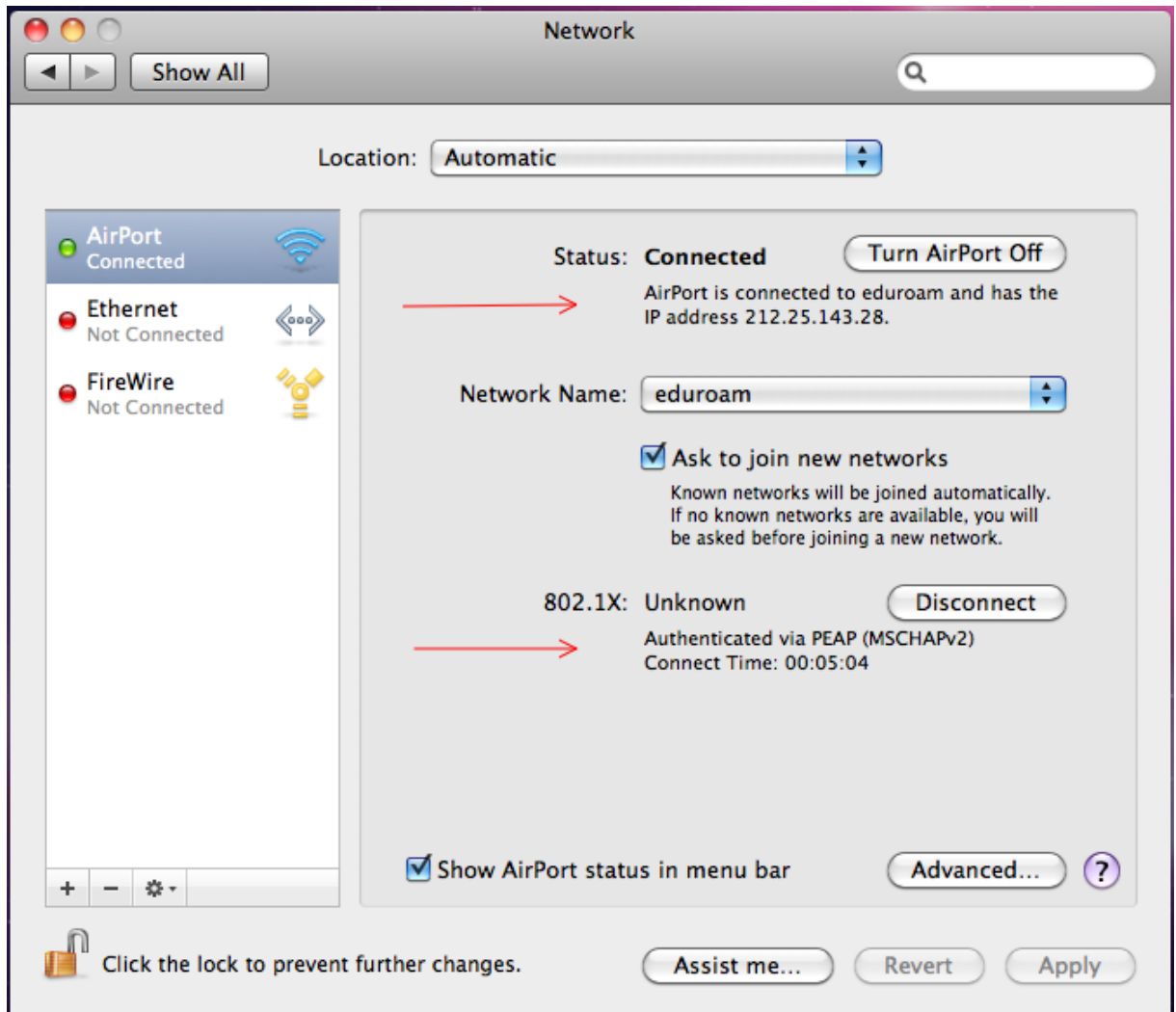
You should now be connected and able to reach Internet. You might need to switch Airport on and off once. From now on the computer should be connected automatically.

NOTE! The connection to Internet is made with your computer's public IP address. It is important that your computer has a firewall and antivirus software installed and updated. Any abuse or charge of abuse will lead to disconnection of your account!

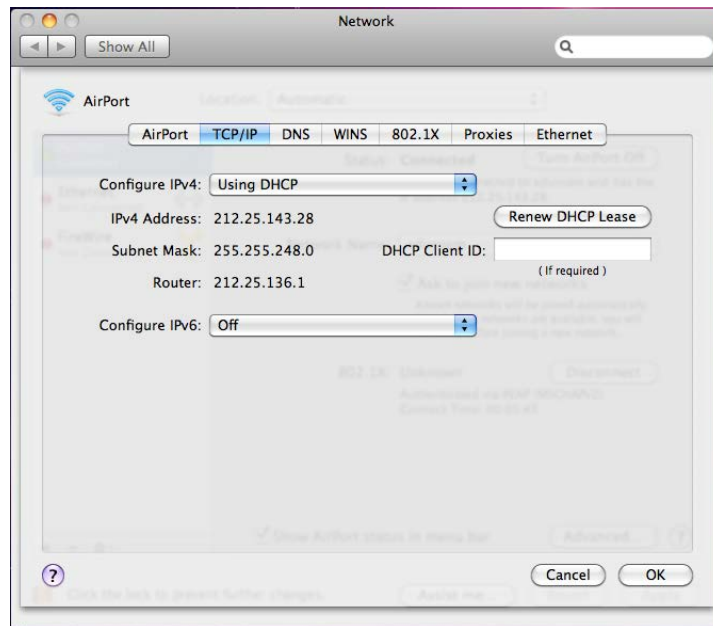
Troubleshooting:

If everything is configured correctly in System Preferences – Network – AirPort:

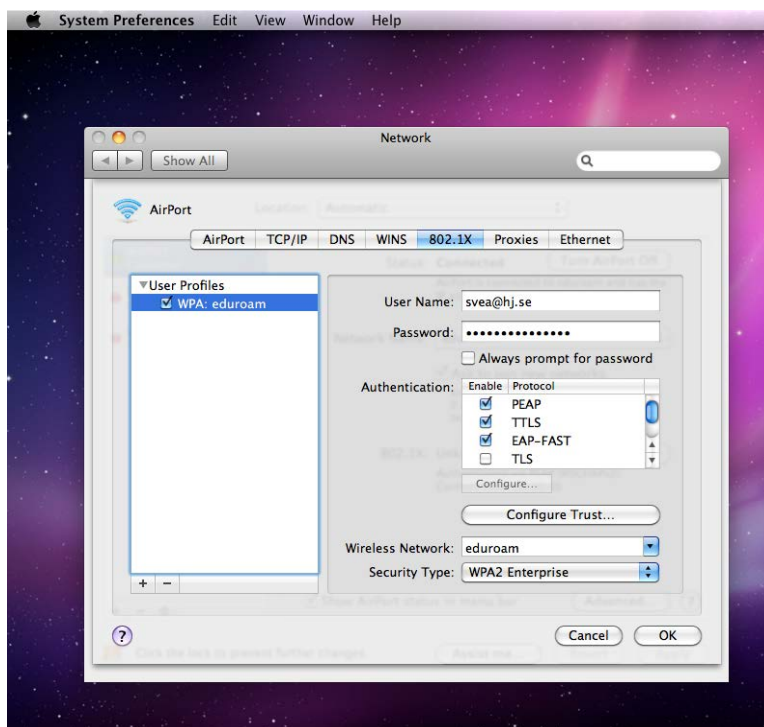
- Authentication via PEAP is successful.
- The computer has a public IP-address.
- The symbol next to AirPort is green.
-



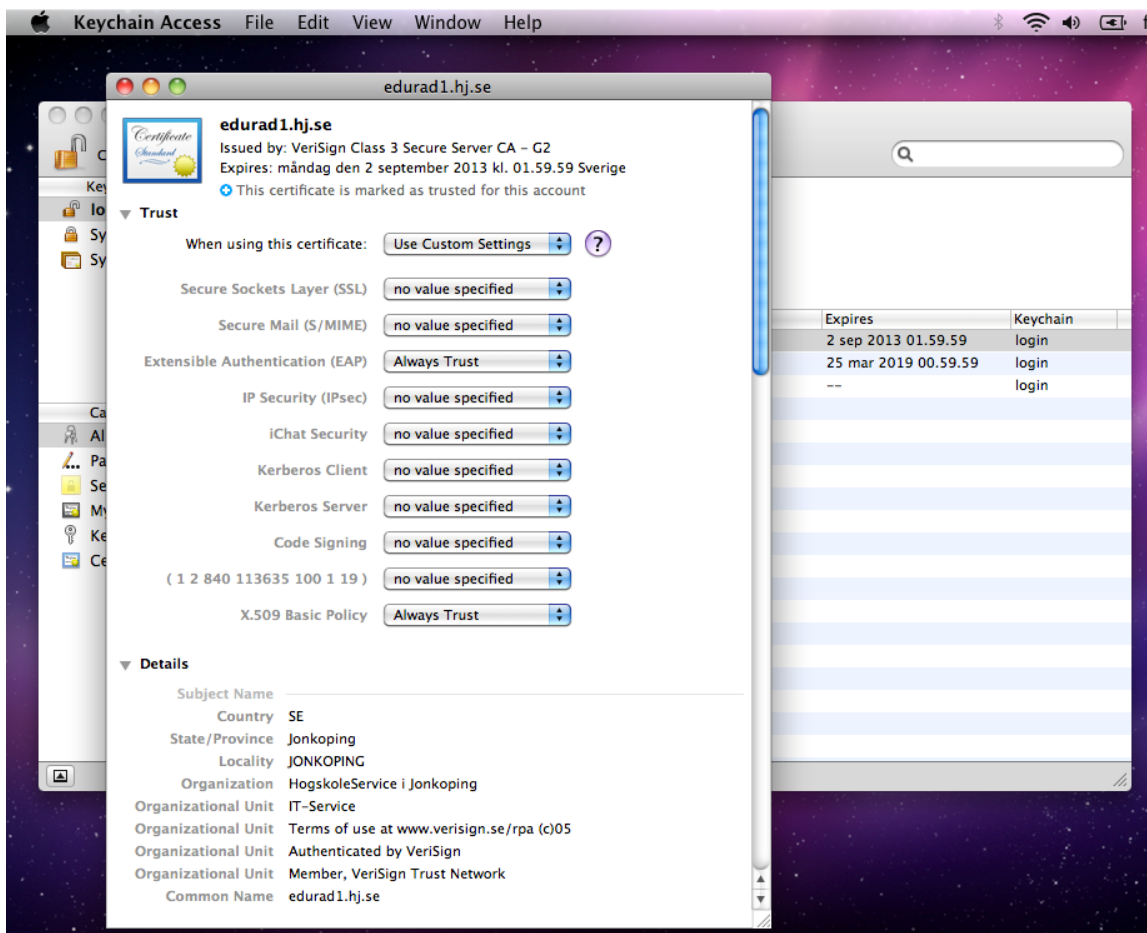
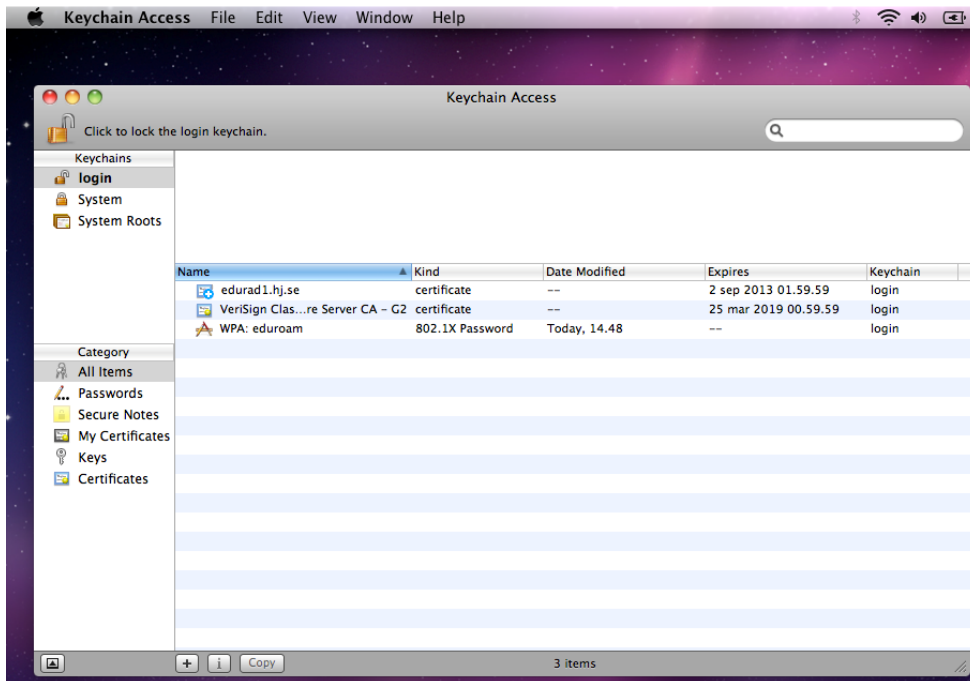
If the login via PEAP is successful but you do not receive an IP address, make sure that Using DHCP is selected under Advanced and TCP/IP.



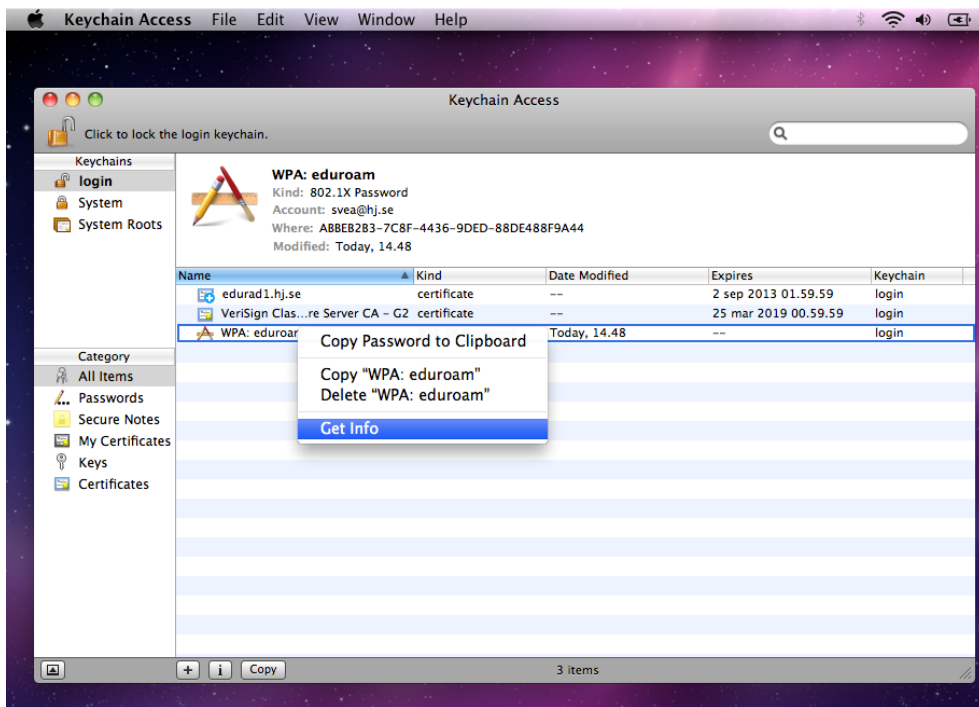
If the login is unsuccessful you will not receive an IP address. It may help to change your eduroam password. Change it here: www.ju.se/myaccount.



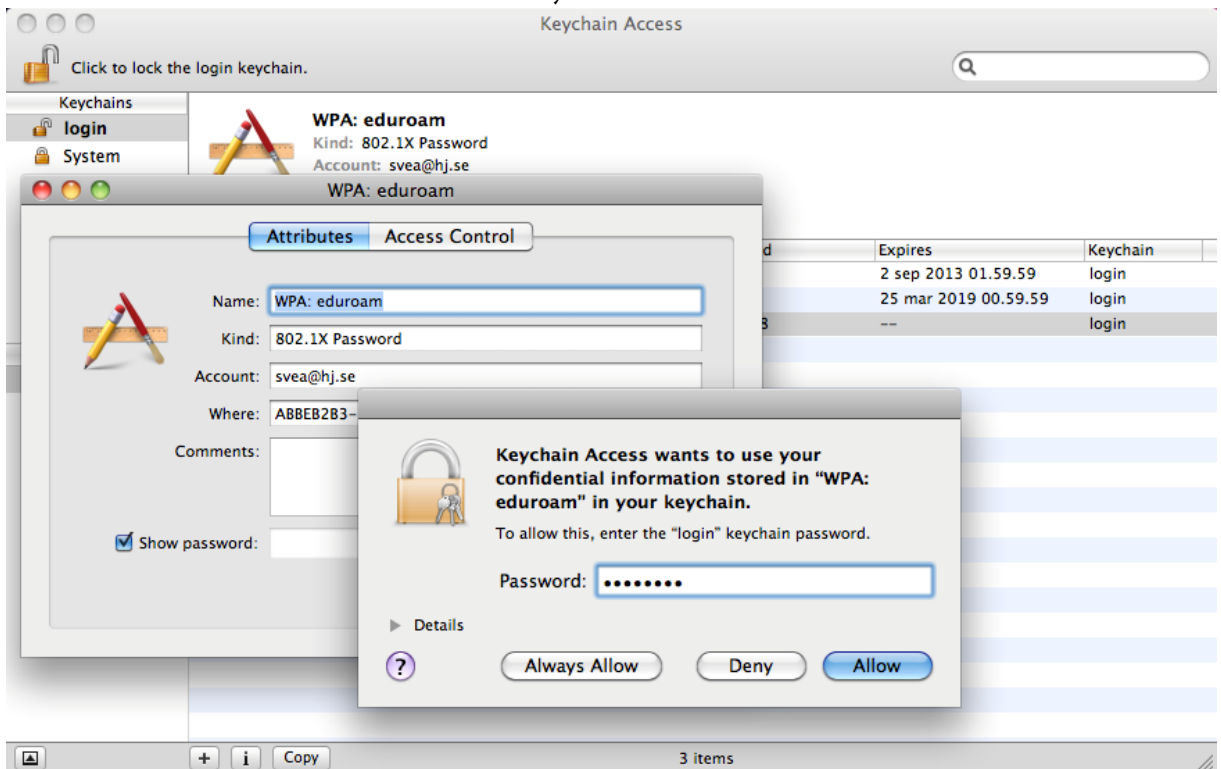
You can check the certificate in Keychain Access.



If you have changed your eduroam password you may have to update the password in the KeyChain. To do this, open Keychain Access. Right click on WPA: eduroam and select Get Info.



Click Show Password and authenticate with your Mac account. Click on Allow.



You can now verify that your password is correct. Click Save Changes if you want to change your settings.

